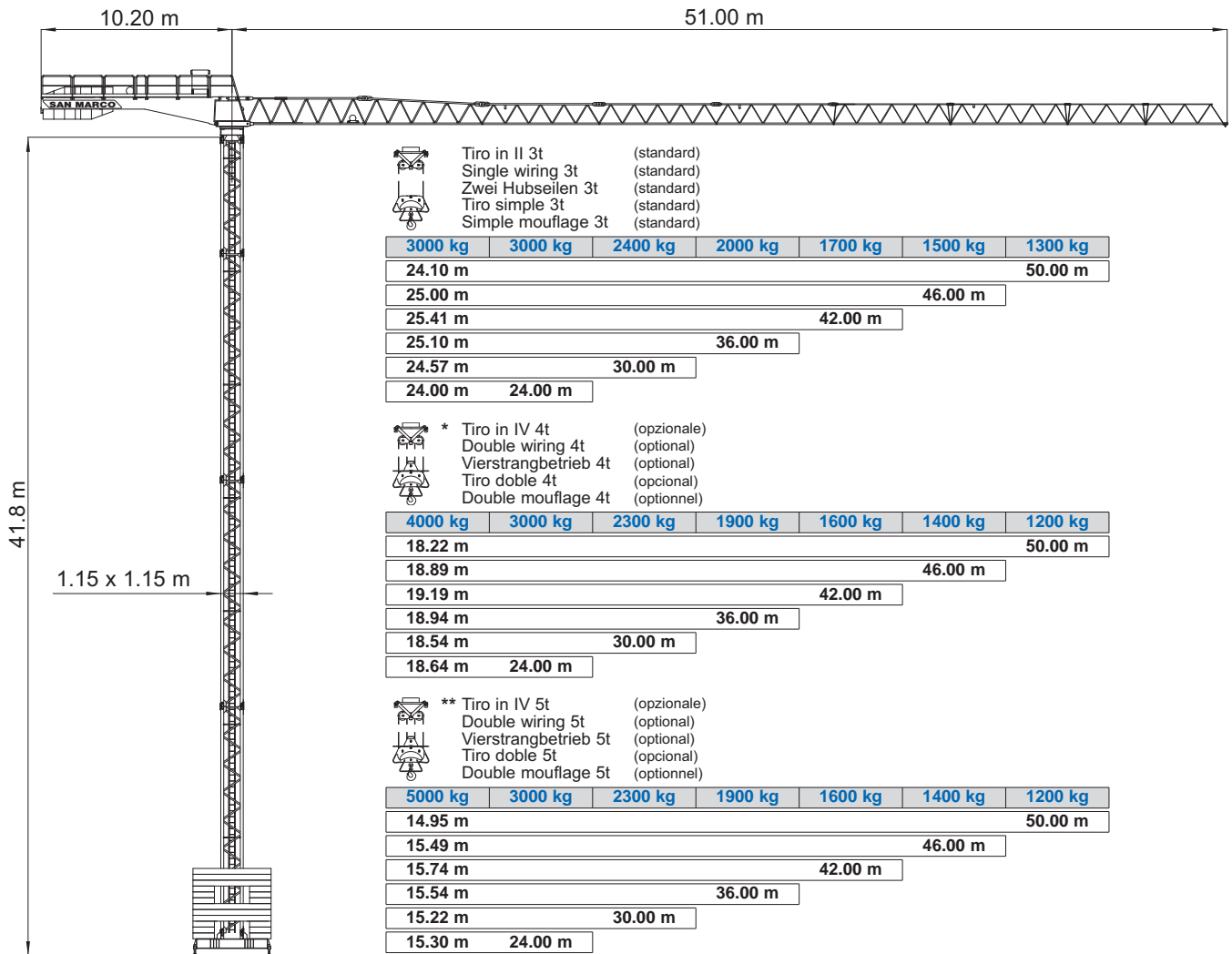


- IT** Gru a torre modulare - Versione City Crane
- UK** Modular tower crane - City Crane Version
- DE** Modulare Turmdrehkran - City Crane Ausführung
- ES** Grua a montaje modular - Versión City Crane
- FR** Grue a tour modulaire - Version City Crane

# SMT 501

## Triverter 444



- Tiro in II 3t (standard)
- Single wiring 3t (standard)
- Zwei Hubseilen 3t (standard)
- Tiro simple 3t (standard)
- Simple mouflage 3t (standard)

3000 kg	3000 kg	2400 kg	2000 kg	1700 kg	1500 kg	1300 kg
24.10 m						50.00 m
25.00 m					46.00 m	
25.41 m				42.00 m		
25.10 m			36.00 m			
24.57 m		30.00 m				
24.00 m		24.00 m				

- \* Tiro in IV 4t (opzionale)
- Double wiring 4t (optional)
- Vierstrangbetrieb 4t (optional)
- Tiro doble 4t (opcional)
- Double mouflage 4t (optionnel)

4000 kg	3000 kg	2300 kg	1900 kg	1600 kg	1400 kg	1200 kg
18.22 m						50.00 m
18.89 m					46.00 m	
19.19 m				42.00 m		
18.94 m			36.00 m			
18.54 m		30.00 m				
18.64 m		24.00 m				

- \*\* Tiro in IV 5t (opzionale)
- Double wiring 5t (optional)
- Vierstrangbetrieb 5t (optional)
- Tiro doble 5t (opcional)
- Double mouflage 5t (optionnel)

5000 kg	3000 kg	2300 kg	1900 kg	1600 kg	1400 kg	1200 kg
14.95 m						50.00 m
15.49 m					46.00 m	
15.74 m				42.00 m		
15.54 m			36.00 m			
15.22 m		30.00 m				
15.30 m		24.00 m				

- IT** Diagrammi di carico
- UK** Loads diagrams
- DE** Lastkurven
- ES** Curvas de carga
- FR** Courbes de charges

m	14	16	18	20	22	24	26	28	30	32	34	36	38	40	42	44	46	48	50	m
3.00	3.00	3.00	3.00	3.00	3.00	3.00	2.75	2.53	2.34	2.18	2.03	1.90	1.79	1.69	1.59	1.51	1.43	1.36	1.30	50
3.00	3.00	3.00	3.00	3.00	3.00	3.00	2.87	2.64	2.44	2.27	2.12	1.99	1.87	1.76	1.66	1.58	1.50	46		
3.00	3.00	3.00	3.00	3.00	3.00	3.00	2.92	2.69	2.49	2.31	2.16	2.02	1.90	1.79	1.70	42				
3.00	3.00	3.00	3.00	3.00	3.00	3.00	2.88	2.65	2.45	2.28	2.13	2.00	36							
3.00	3.00	3.00	3.00	3.00	3.00	3.00	2.81	2.59	2.40	30										
3.00	3.00	3.00	3.00	3.00	3.00	3.00	24													

- Tiro in II 3t
- Single wiring 3t
- Zwei Hubseilen 3t
- Tiro simple 3t
- Simple mouflage 3t

m	14	16	18	20	22	24	26	28	30	32	34	36	38	40	42	44	46	48	50	m
4.00	4.00	4.00	3.59	3.22	2.92	2.66	2.44	2.25	2.08	1.93	1.81	1.69	1.59	1.49	1.41	1.33	1.26	1.20	50	
4.00	4.00	4.00	3.74	3.36	3.04	2.77	2.54	2.35	2.17	2.02	1.89	1.77	1.66	1.56	1.48	1.40	46			
4.00	4.00	4.00	3.81	3.42	3.10	2.82	2.59	2.39	2.22	2.06	1.92	1.80	1.69	1.60	42					
4.00	4.00	4.00	3.76	3.37	3.05	2.78	2.55	2.35	2.18	2.03	1.90	36								
4.00	4.00	4.00	3.67	3.29	2.98	2.71	2.49	2.30	30											
4.00	4.00	4.00	3.69	3.31	3.00	24														

- Tiro in IV 4t\*
- Double wiring 4t
- Vierstrangbetrieb 4t
- Tiro doble 4t
- Double mouflage 4t

m	14	16	18	20	22	24	26	28	30	32	34	36	38	40	42	44	46	48	50	m
5.00	4.63	4.05	3.59	3.22	2.92	2.66	2.44	2.25	2.08	1.93	1.81	1.69	1.59	1.49	1.41	1.33	1.26	1.20	50	
5.00	4.82	4.22	3.74	3.36	3.04	2.77	2.54	2.35	2.17	2.02	1.89	1.77	1.66	1.56	1.48	1.40	46			
5.00	4.90	4.30	3.81	3.42	3.10	2.82	2.59	2.39	2.22	2.06	1.92	1.80	1.69	1.60	42					
5.00	4.84	4.23	3.76	3.37	3.05	2.78	2.55	2.35	2.18	2.03	1.90	36								
5.00	4.72	4.13	3.67	3.29	2.98	2.71	2.49	2.30	30											
5.00	4.75	4.16	3.69	3.31	3.00	24														

- Tiro in IV 5t\*\*
- Double wiring 5t
- Vierstrangbetrieb 5t
- Tiro doble 5t
- Double mouflage 5t

\*/\*\* A richiesta  
On request  
Auf Wunsch  
Sobre demanda  
Sur demande



DIN 15018 H1 B3  
A4 - ISO 4301



